



i10br.com

I-10 Widening Project, Baton Rouge Westbound Flyover Widening at I-110 Project Status Update

April 2026

State and Federal Aid Project No. H.004100

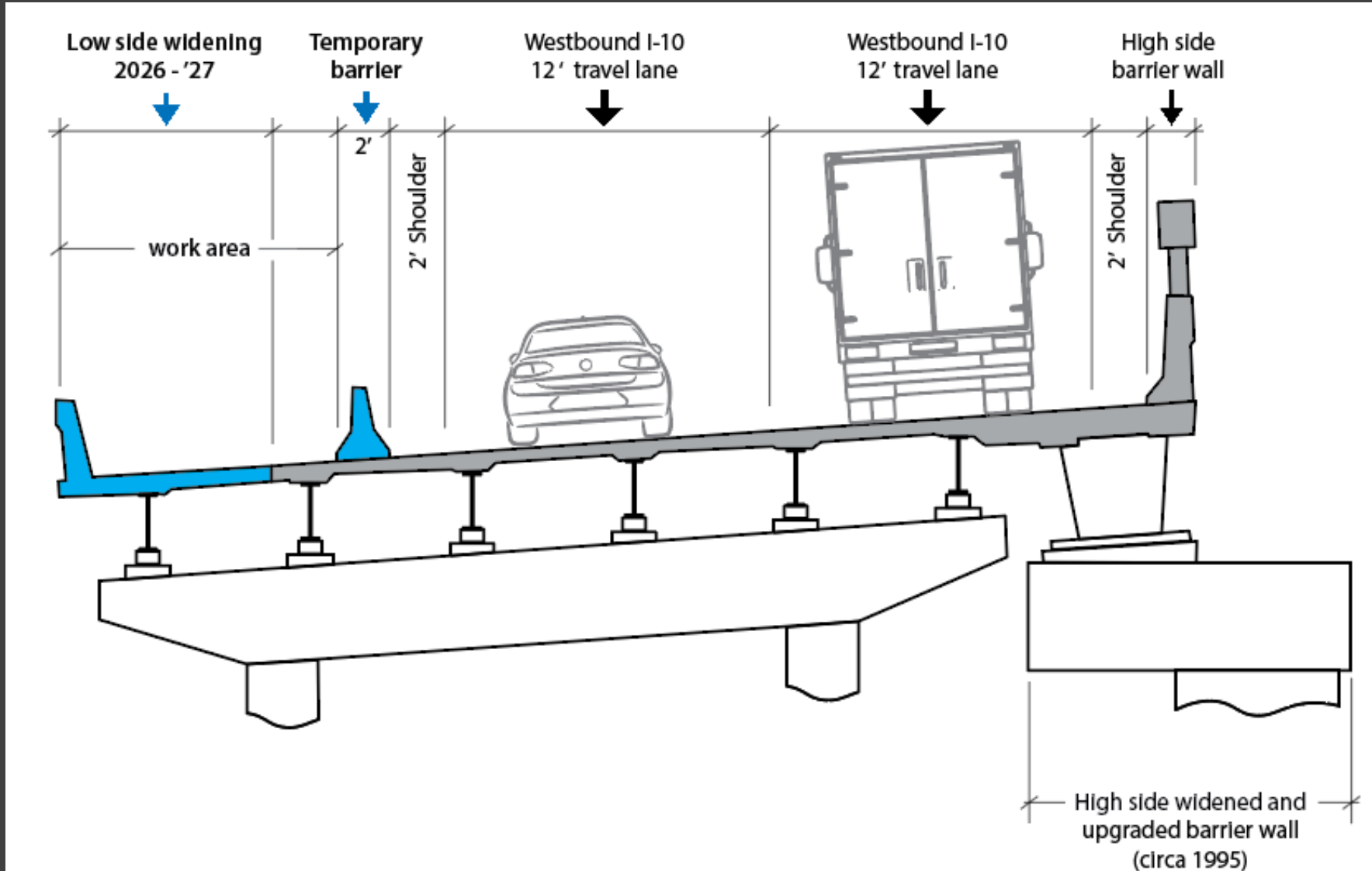


I-10 WB Flyover Curve – Low Side Widening & I-110 SB to I-10 WB Ramp Widening



- The low side of the I-10 westbound flyover curve at I-110 will be widened.
- The ramp from I-110 southbound to I-10 westbound will be widened.
- This work is a precursor to allow future stages of construction.

I-10 WB Flyover Curve – Low Side Widening



Anticipated Impacts of Low Side Widening Work

Beginning March 2026 and extending through Summer 2027:

- **The Contractor must demolish bridge deck and build new widened bridge deck.**
- **Limited access to BREC's Expressway Park below**
- **Occasional, temporary closures of surface streets**
- **Occasional, temporary, overnight closure of interstate lanes**
- **Corresponding detours**

Temporary Overnight Weekend Closures

- Temporary full closure of one direction of the interstate (I-10 or I-110) will only occur on occasional weekend nights. (10pm – 5am)
- Temporary partial lane closures may occasionally occur on weekday nights. (10pm – 5am)
- Advance notice will be provided to news media approximately two weeks prior to closures.



Detour Routes

There are four scenarios for temporary detours during the westbound flyover “low-side” widening process.

1. I-110 southbound exit to I-10 west.

Advance detour using US 190 across Mississippi River Bridge, or immediate detour to Government Street.

2. I-10 westbound closed at I-110.

Detour I-110 north to US 190 across Mississippi River Bridge.

3. I-110 southbound closed north of I-10.

Detours to Airline Hwy. or Florida Street / Florida Boulevard via north 9th Street.

4. I-10 eastbound ramp to I-110 north.

Detours occur within West Baton Rouge Parish via LA 415 or LA 1 to US 190 and crossing the Mississippi River Bridge.

Let’s examine each of these scenarios more closely...

#1 I-110 SB Exit to I-10 West • Nighttime Closure & Detour

- The exit from I-110 southbound to I-10 westbound will experience closures during certain steps of construction.
- With advance knowledge drivers can take the US 190 Mississippi River bridge.
- Otherwise, drivers exit at Government Street and return to I-10 WB via St. Ferdinand Street.



I-110 RAMP CLOSURE

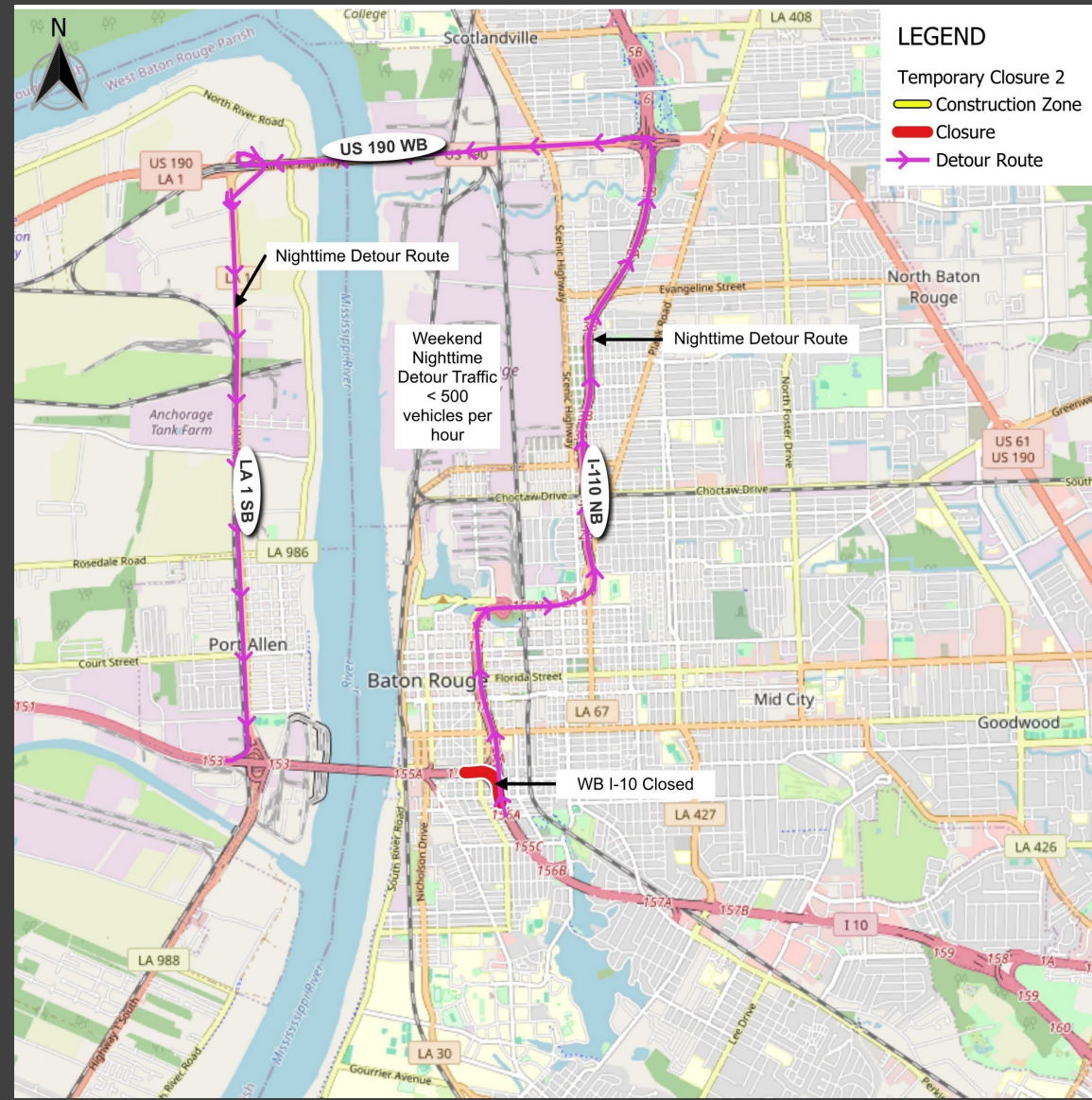
East Baton Rouge Parish

I-10 Widening
and Reconstruction



#2 I-10 WB • Nighttime Closure & Detour

- I-10 WB traffic will use US 190 bridge during temporary overnight closures.



I-10 WESTBOUND FLYOVER CLOSURE

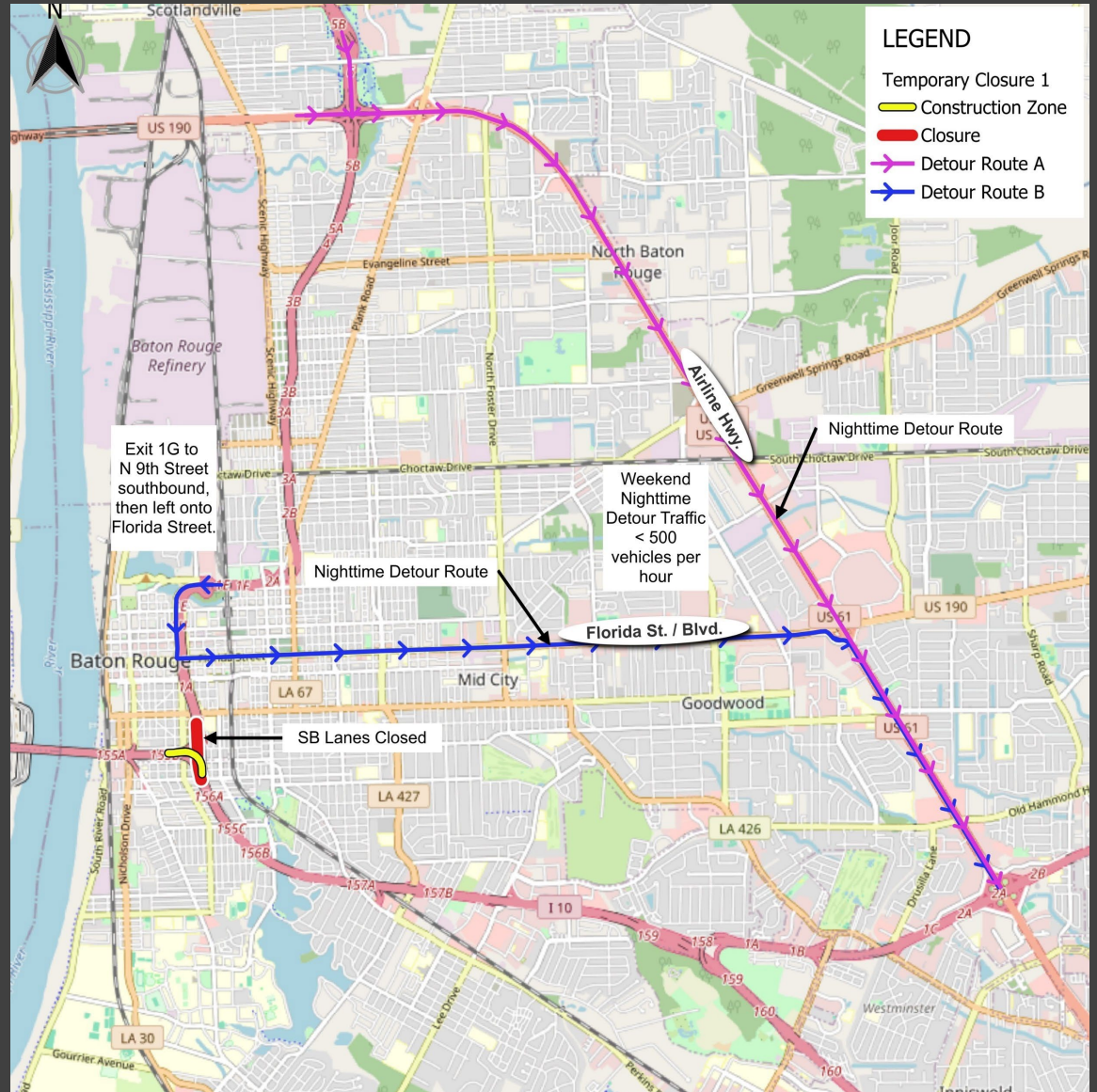
East Baton Rouge Parish

I-10 Widening and Reconstruction



#3 I-110 SB • Nighttime Closure & Detour

- I-110 SB closure will be necessary to allow widening of I-10 WB passing over it.
- I-110 SB to I-10 WB remains open.
- All I-110 SB traffic destined to I-10 EB will either exit to Airline Hwy., or at 9th Street to Florida Street.
- Terrace Street exit will be temporarily unavailable.



I-110 SOUTH CLOSURE

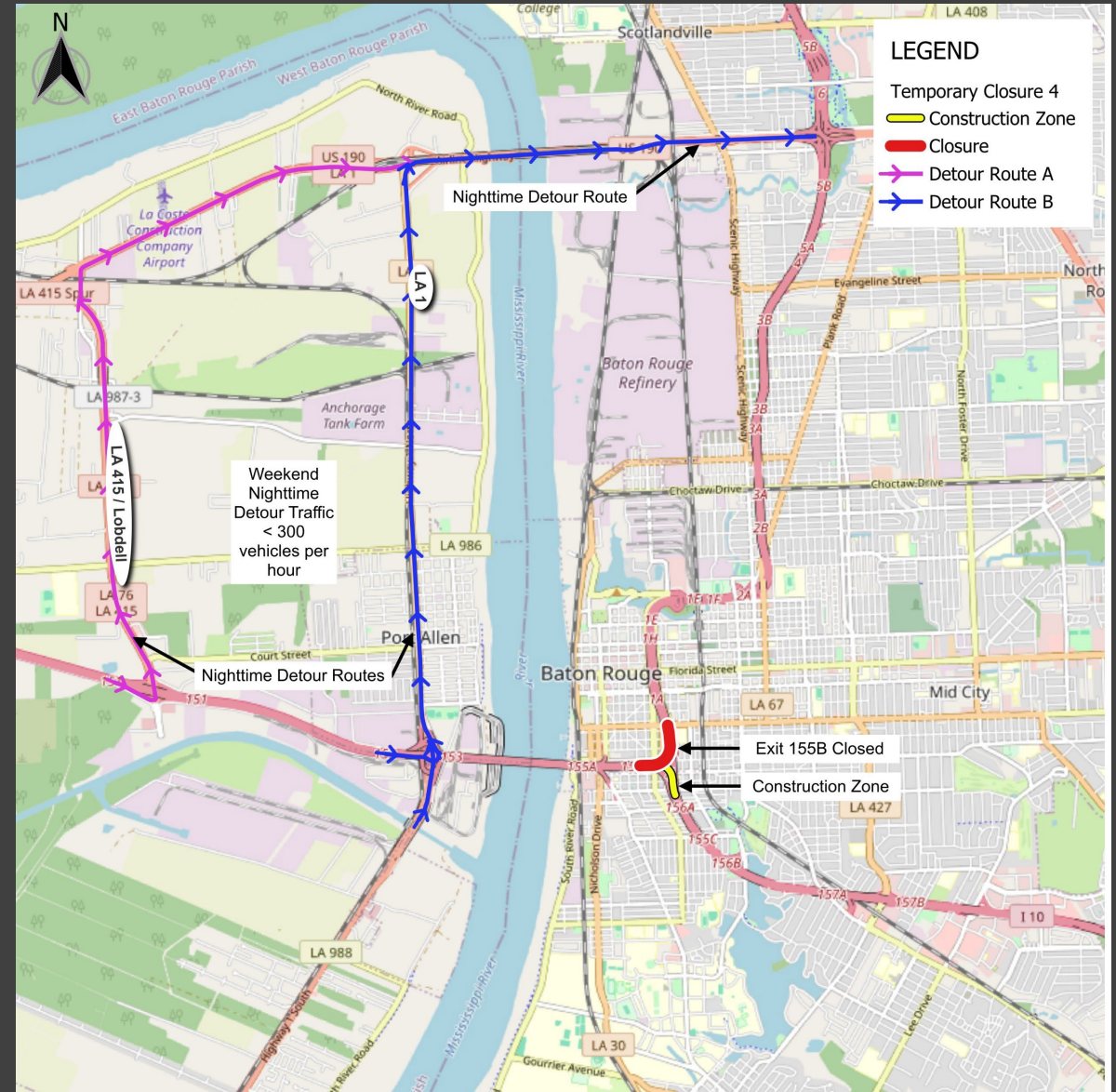
East Baton Rouge Parish

I-10 Widening and Reconstruction



#4 I-10 EB Ramp to I-110 North • Nighttime Closure & Detour

- Temporary ramp closure from I-10 eastbound to I-110 northbound.
- Affects traffic entering Baton Rouge from the west and heading north on I-110.
- Traffic heading eastbound on I-10 mainline is unaffected.
- Detour routes are LA 415 or LA 1 in West Baton Rouge parish.



I-110 RAMP CLOSURE

East Baton Rouge Parish

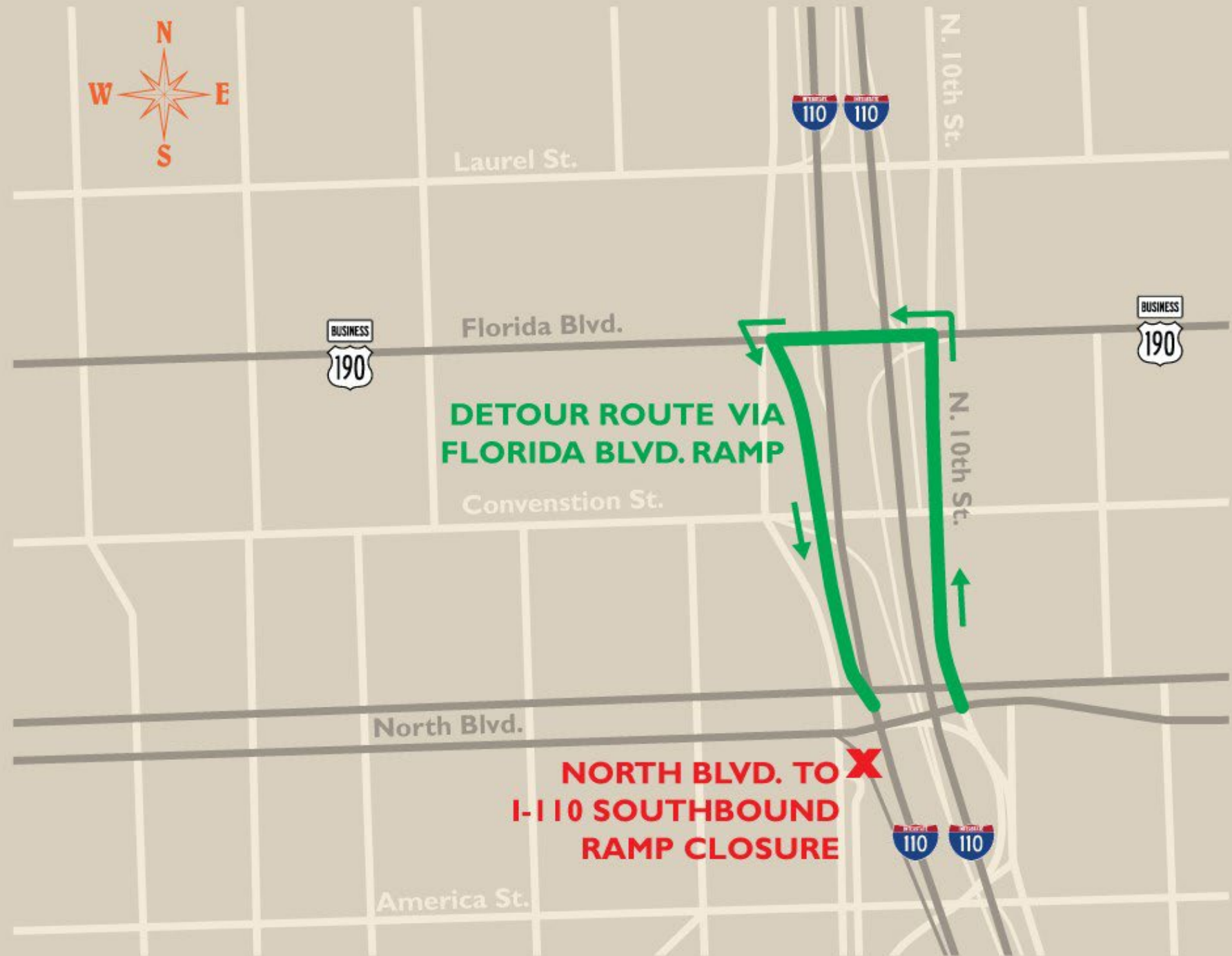
I-10 Widening
and Reconstruction



I-110 RAMP CLOSURE

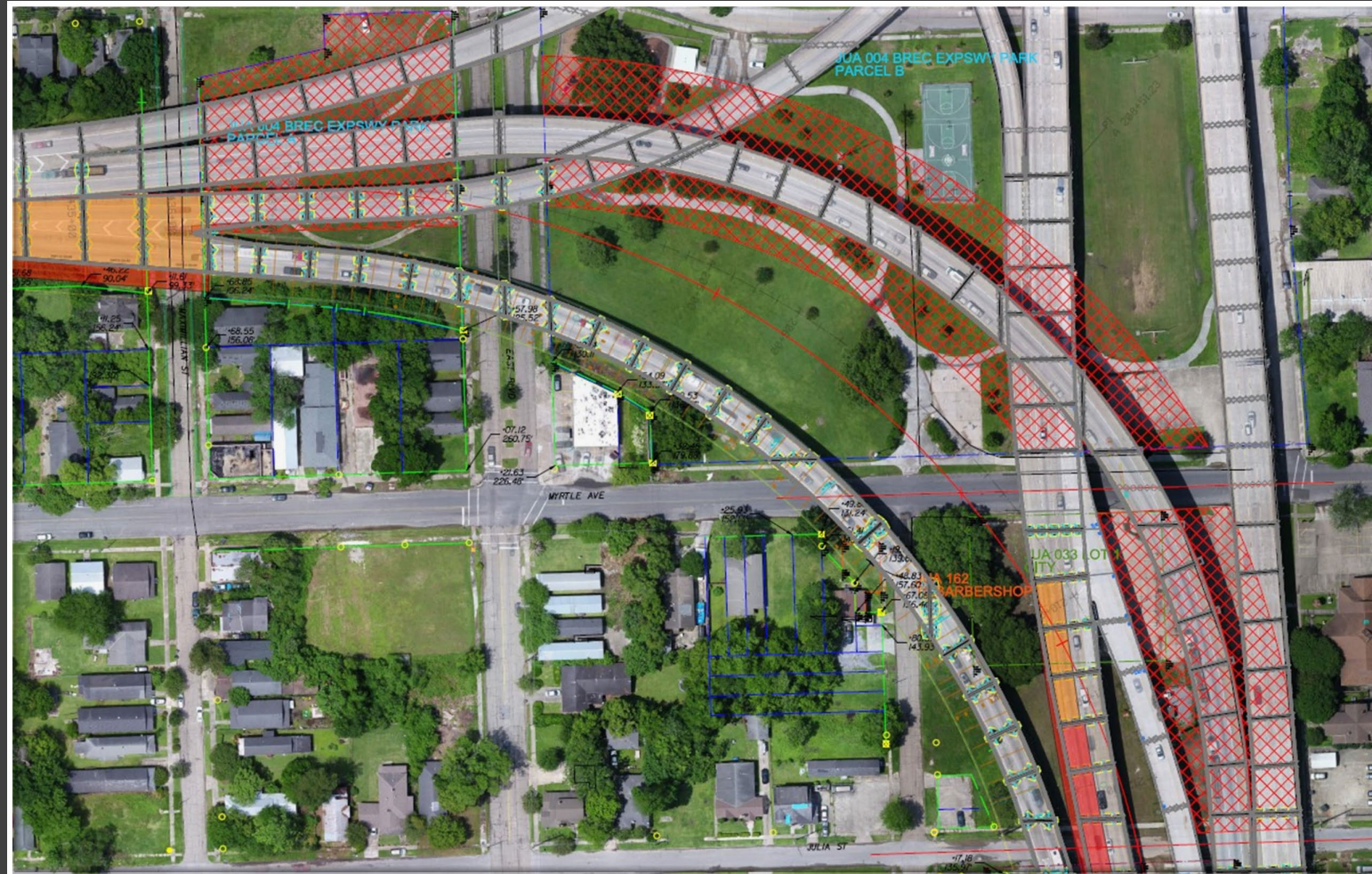
East Baton Rouge Parish

I-10 Widening
and Reconstruction



Partial Closure of Expressway Park

- Areas hatched in red will be closed to the public during construction.
- Begins March 2026
- Closed:
 - Walking path
 - Playground
 - Parking area
- Contractor is striving to maintain access for the football field and the basketball court. Short duration closures may be required for these areas.



Mitigation Techniques

- State coordination with local agencies.
- Subscribe to LA 511 and MyDOTD services to receive automated messages. Be alert for local traffic notices.
- Use mobile phone apps to check traffic before you drive; follow a suggested alternate route to your destination.
- Reconsider non-essential interstate trips during these weekend nights when temporary closures occur.
- Advance notice of closures will be messaged through the project website i10br.com, DOTD's social media, MyDOTD, the LA 511 system, and apps such as Drivewyze for motor freight.



Staying Aware of DOTD Project Activity

Did you know...

...there are many ways for everybody to keep current with DOTD's projects around the state? Whether you're the general public, elected officials, the media, or business owners, DOTD has various informational resources to fit your need. If you're located in Bryceland or Baton Rouge, Vivian or Venice, or anywhere in between, this information sheet provides an overview of how anyone can follow infrastructure project activity.

dotd.la.gov

DOTD's main website with a wealth of information, including all the various ways to stay informed about project activity.



My DOTD

A way to stay connected with DOTD and up-to-date on local projects, lane and road statuses, and other department activity. You can get DOTD notices and press releases delivered to your email.



Interactive map showing current state roadway conditions, traffic impacts, construction activity, and more. You can visit the website or download the mobile app. Motorists in Louisiana can call 511, and out-of-state travelers may call 888-ROAD-511.



Email DOTD's customer service center. If you have a general question or concern for DOTD, email the department at dotdcs@la.gov.



Call DOTD's customer service center. If you have a general question or concern for DOTD, call the department at 877-452-3683. Customer service is open Monday through Friday from 7:30 a.m. to 5 p.m.



DOTD's Facebook page with lots of information and photos. You can also communicate with DOTD directly.



DOTD's X account with information, photos, and links.



DOTD's Instagram account with many photos and other information.




DOTD's YouTube account with hundreds of videos. There are informative videos about projects, and there are educational videos about various aspects of the department, transportation, and infrastructure.





THANK YOU!

 **Brandie Bordelon**
Public Information Manager
Kiewit-Boh AJV

 **info@i10br.com**

 **225-954-5126**

 **i10br.com**



MyDOTD

My DOTD is a free service to stay notified on DOTD press releases, project developments and public meetings, statewide as well as in your local community.