

Noise Walls

Interstate Driver's View



Noise Walls

Real-World Product Examples

EXAMPLES OF BUILT PRODUCTS



Transparent Acrylic Sound Wall



Transparent Sound Wall With Etching



Frosted Sound Wall



Opaque Acrylic Sound Wall



Aluminum Sound Wall

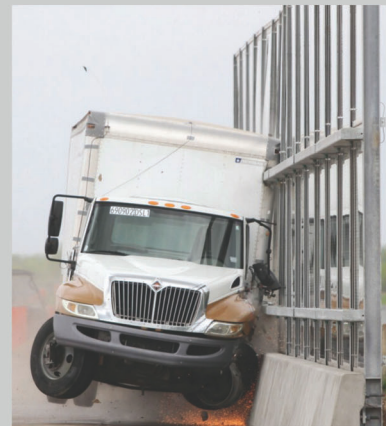


Product photos of installed walls, (left) and of sample assemblies (above.)

The products meet crash test requirements.

TL-4 CRASH TESTED SYSTEM

Approved by the Federal Highway Administration for use in highway projects. This system reduces vehicle roll/lean upon impact and minimizes the intrusion of vehicle between posts while tying the entire system together for greater stability.



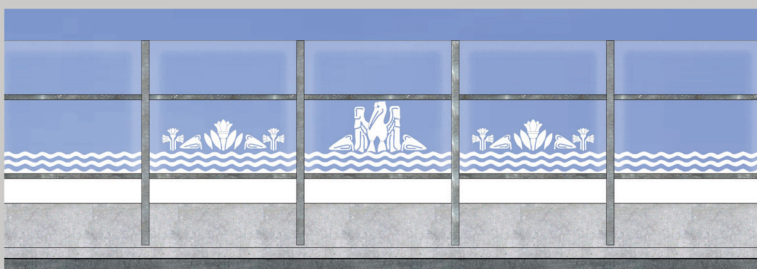
NOISE WALL DESIGN



Existing Noise Wall Design



Example Of Built Noise Wall With Etching



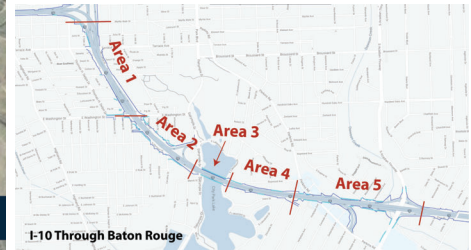
Noise Wall Design Inspired By Existing Noise Walls

Etched Design Option

The art deco pelican and plant motifs present on existing concrete I-10 noise walls drawn from the Louisiana state capitol building can be etched onto the acrylic panels.

Area 1

Noise Wall Options



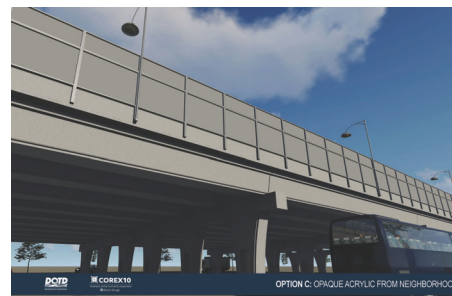
Option A: Transparent, Viewed from Neighborhood, With and Without Etched Design



Option B: Frosted Acrylic, Viewed from Neighborhood, With and Without Etched Design



Option C: Opaque Acrylic, Viewed from Neighborhood, With and Without Etched Design

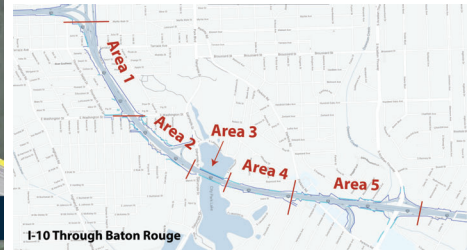


Option D: Aluminum, Viewed from Neighborhood



Area 2

Noise Wall Options



Option A: Transparent, Viewed from Neighborhood, With and Without Etched Design



Option B: Frosted Acrylic, Viewed from Neighborhood, With and Without Etched Design



Option C: Opaque Acrylic, Viewed from Neighborhood, With and Without Etched Design



Option D: Aluminum, Viewed from Neighborhood

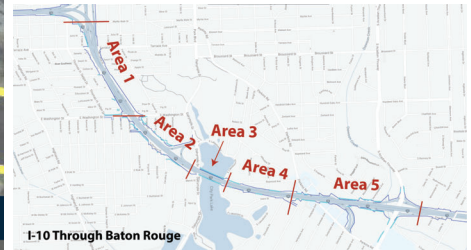




Area 3

City Park Lake Bridge

Transparent Noise Wall
Chosen by DOTD



Proposed I-10 bridge over
City Park Lake
featuring transparent noise
wall panels.



Birds-eye view of
proposed bridge and towers.

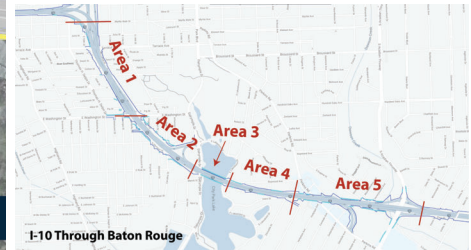


Local street level view of
proposed bridge.



Area 4

Noise Wall Options



Option A: Transparent, Viewed from Neighborhood, With and Without Etched Design



Option B: Frosted Acrylic, Viewed from Neighborhood, With and Without Etched Design



Option C: Opaque Acrylic, Viewed from Neighborhood, With and Without Etched Design

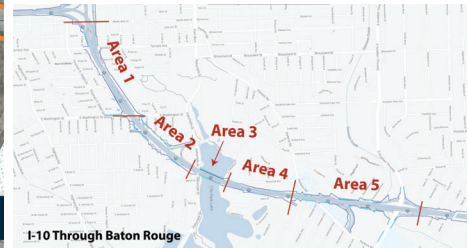
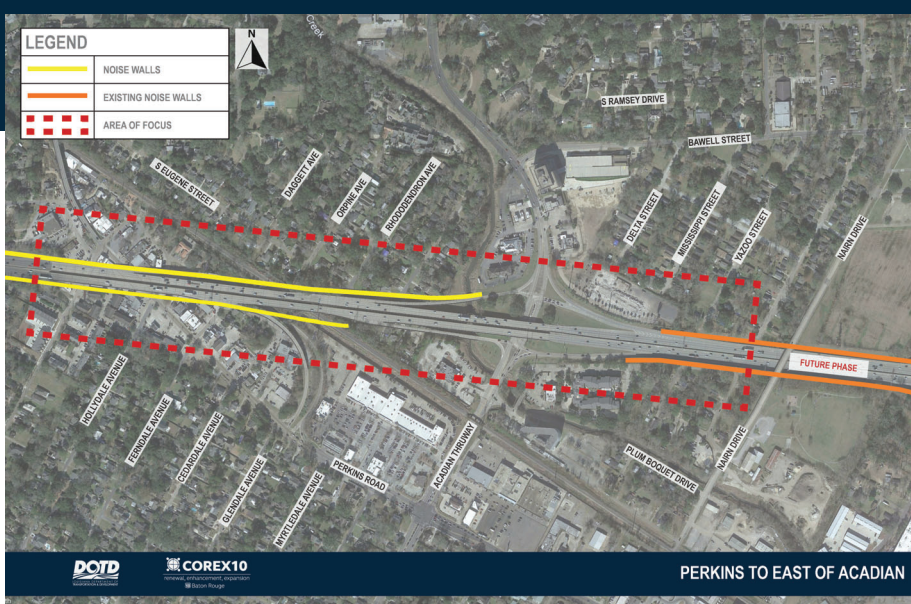


Option D: Aluminum, Viewed from Neighborhood



Area 5

Noise Wall Options



Option A:
Transparent, Viewed from
Neighborhood, With and
Without Etched Design



Option B:
Frosted Acrylic, Viewed from
Neighborhood, With and
Without Etched Design



Option C:
Opaque Acrylic, Viewed from
Neighborhood, With and
Without Etched Design



Option D:
Aluminum, Viewed from
Neighborhood

